

UPPER ROOF LAYOUT

Trusstech SA Pty Ltd

ABN: 40 1 318 22 140 16 High Street Dry Creek SA 5094 Ph: 08 8260 6006



OAKRIDGE BUILDING SERVICES

PH : 83637222
FAX : 83637225

CONVENTIONAL TIMBER DETAILS

CEILING JOISTS 90x35 MGP10 @ 600 CTS UNO
HANGING BEAMS @ 1800 MAX CTS
RAFTERS 120x35 MGP10 @ 600 CTS FOR TILES &
1200 CTS FOR IRON UNO

TRUSS DETAILS
TRUSSES & BRACING TO BE INSTALLED, ERECTED
& BRACED IN ACCORDANCE WITH AS4440-2004
STABILIZER/HANGER @ 1800 CTS MAX UNO
BEARING WIDTH FOR TRUSSES 90mm UNO
TS = TRUNCATED STANDARD
TG = TRUNCATED GIRDER

UNLESS SHOWN OTHERWISE ON LAYOUT,
NO SPECIAL LOADS HAVE BEEN ALLOWED.
EG - AC UNITS, SOLAR PANELS ETC.
MINIMUM BEARING WIDTH FOR TIMBER TRUSSES SHOULD BE
70MM. FOR BEARING WIDTH LESS THAN 70MM, CONFIRMATION
FROM THE TRUSS ENGINEER SHOULD BE SOUGHT.

PURLINS : 90x45 MGP10 @ 900mm cts
generally with maximum endspans of 900mm
* JOINTS TO BE STAGGERED

SB = SPEED BRACE
SV = SCOTCH VALLEY

NOTE: TRUSSES & JOISTS TO BE POSITIONED
DIRECTLY OVER STUDS

TRUNCATED GIRDER HAS BEEN DESIGNED TO CARRY
CONVENTIONAL HIP END TIMBER
(RAFTERS, HANGING BEAMS & HIPs)

X = INTERNAL SUPPORT / CANTILEVER POINT

LAMINATION DETAILS FOR DOUBLE TRUSS
TOP & BOTTOM CHORDS:

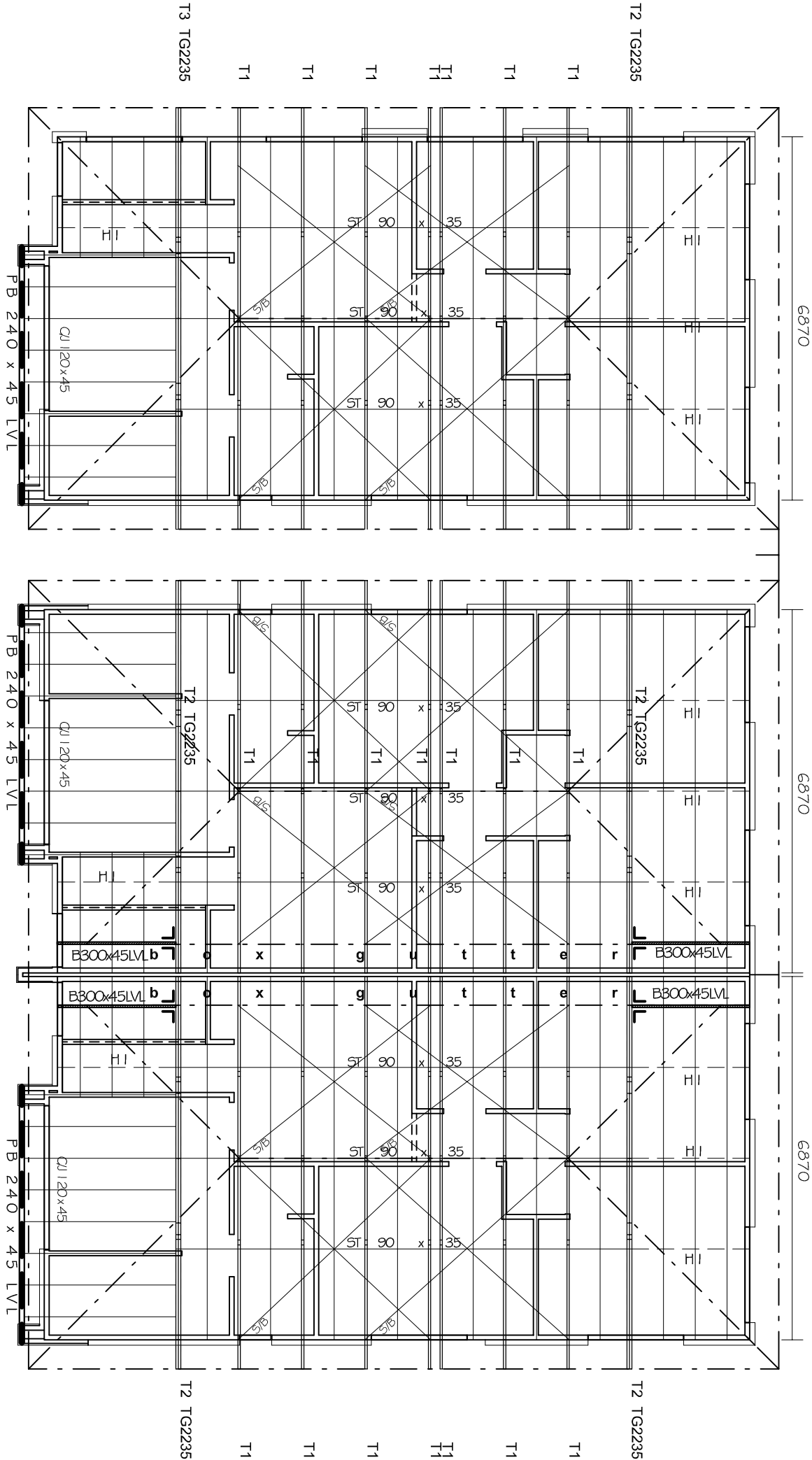
Nail chords together using two rows (staggered)
of 3.05mm nails @ 450mm cts from one side or
use 1 / green tip screw @ 450mm cts

WEBS:

Nail webs together using two rows (staggered) of
3.05mm nails @ 450mm cts from one side or use
1 / green tip screw @ 600mm cts

NOTE:

For up to 38mm thick laminations use 65mm nails
For up to 50mm thick laminations use 75mm nails



D3

D2

D1

AMENDMENTS
FRAMING AMENDED 14/02/2019

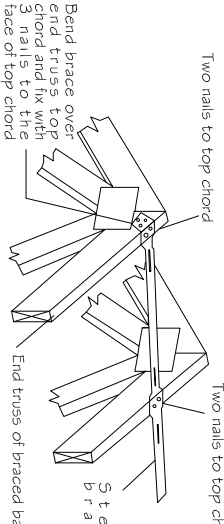
Timber: H0 Dry Swd (can include KD Hwd)	Roofing: Metal Sheet	Wind / Ext / Int: N1 / 0.9 / 0.2	Customer: D/ANDREA DWLG 1+2+3 Site Address: 50-52 WINDSOR ST, MAGILL	
Pitch: 20.0 Deg	TC fix/rest: Softwood @ 1200c / 1200	Structural Fascia Type: No	As per AS 1684.1	
Overhang: 550 mm	Ceiling: Plaster 10mm Supa Span	Ground Snow Load: Sg = 0 kPa		
Spacing: 1200mm	BC fix/rest: Softwood @ 600c / 600	Structure Type: House	Detailer: Matt Ope	Signed:
				Scale: 1 : 100
				Job No: TT02360/1/2

CEILING JOISTS 90x35 MGP10 @ 600 CTS UNO
HANGING BEAMS @ 1800 MAX CTS
RAFTERS 120x35 MGP10 @ 600 CTS FOR TILES &
1200 CTS FOR IRON UNO
HIPS LOWER 190x35 MGP10 UNO
HIPS UPPER 120x35 MGP10 UNO
VT = VALLEY TRIM 120x35 MGP10
RP = RAKING PLATE 190 x 45 MFG10
RIDGE 140x35 MGP10 UNO
UNDERPURLINS 130x63 LVL
COLLAR TIES 90x35 M10 @ 1200 cts < 4.2m
120x35 M10 @ 1200 cts > 4.2m
JOINT GROUP = JD5
ALL MATERIALS ALLOWED AS PER AS 1684.2-2010

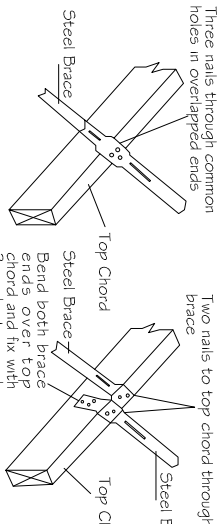
HANGERS:

H1 = 120x35 MGP10
H2 = 140x35 MGP10
H3 = 190x35 MGP10
H4 = 190x45 MGP10

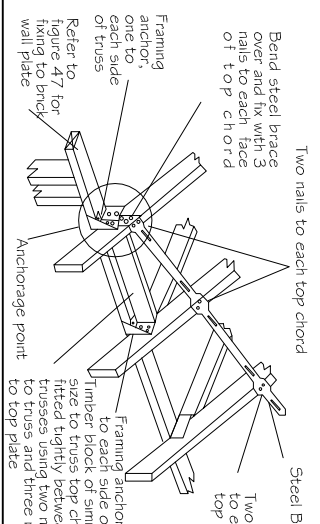
SPEED BRACE FIXING DETAILS AT APEX



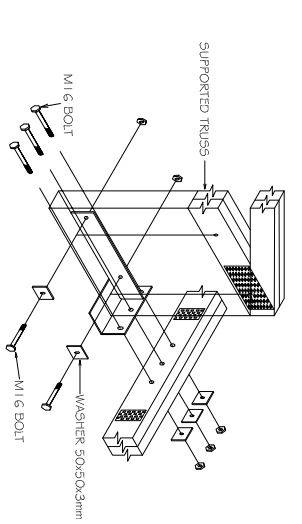
SPEED BRACE SPLICING DETAILS



SPEED BRACE FIXING DETAILS AT HEEL



HIGH-LOAD TRUSS BOOT



TRUSS BOOT

